

PRESSURE TRANSPORT DEVICE

TEMPERATURE-COMPENSATED PRESSURE MANOMETERS AND DENSITY MONITOR

1) PROBLEM DESCRIPTION:

Transport of an apparatus SF₆ gas filled up to a pressure of 1 relative Bar, with transport temperature from -30°C to +60°C;

Our customers have required a system reading such low pressure during the transport phase, because the apparatus cannot be filled at nominal filling pressure due to safety reasons.

2) EMD SOLUTION:

We have studied this problem carefully and it can be solved with a device mounted on the apparatus only for transport, after that it can be disassembled and re-used again.

This device has need to mount where there is a valve, and it can be the filling valve or in place of the working instrument.

The customer can choose among wide range of device and the connection can be customized. This device is ONLY for transport, once on field it MUST BE REMOVED.

3) MAIN FEATURES:

- Case: AISI 304
- Diameter: Ø 60
- Screen : Polycarbon or glass
- Dial : Aluminum three colors (red, green, yellow)
- Range: from -1 to 1 Bar rel.
- Precision: 1.0 or 1.6 F.S.
- Overpressure: F.S. + 30%
- IP grade : IP 54
- Operating temperature range: -30° + 60°C
- Maximum leakage rate: $< 1 \times 10^{-9}$ mbar*l/sec

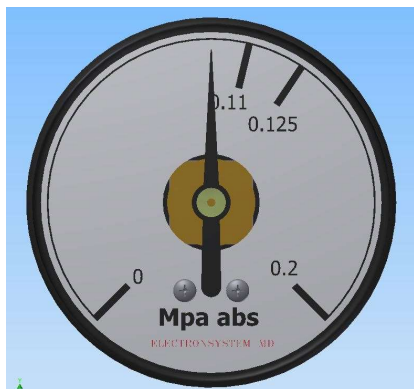
High-Accuracy SF₆ Gauge and Sensor

4) DEVICE TYPE:

The main devices for the transport are:

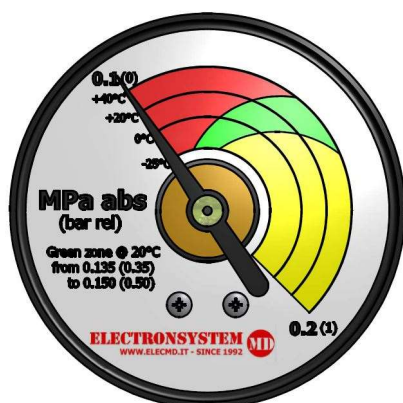
MANOMETER

-Manometer with dial not-compensated



SF₆ monitoring in MV Equipment was based on simple manometers based on bourdon tube element

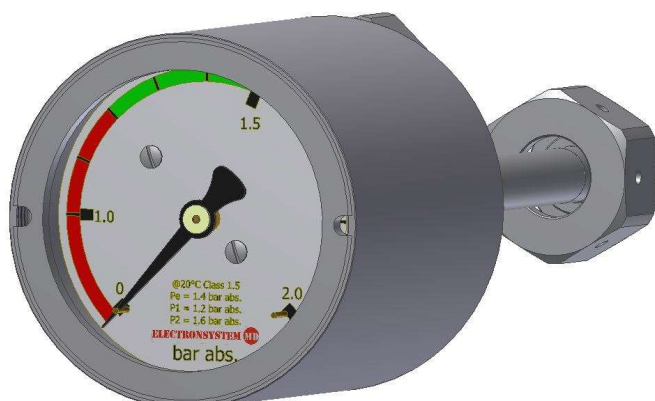
-Manometer with dial compensated;



SF₆ monitoring in MV Equipment was based on simple manometers based on bourdon tube element and plus it has a special dial with compensation

DENSIMETER with REFERENCE CHAMBER

- Densimeter with dial;
- Densimeter with dial and up to two contacts;

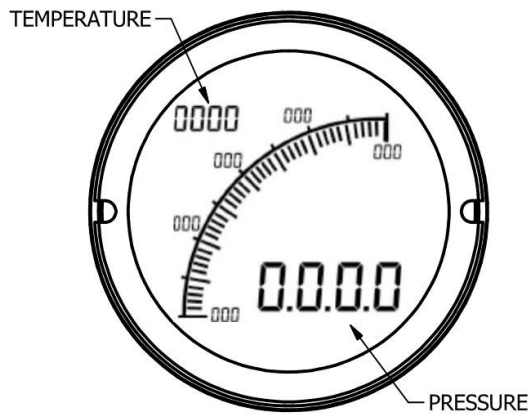


CDM combines the bellow reliability with the geometry of the manometer, providing higher performance and plug in solution for customers interested in changing the manometer with a device offering local indication by dial and contacts , up to two, for remote control.

High-Accuracy SF₆ Gauge and Sensor

DENSIMETER with LCD DIAL

-Densimeter with LCD dial



CDM with LCD dial :

it has a new technology with high-accuracy sensors
It can read pressure and temperature
and them are displayed on LCD Dial

5) GAS CONNECTION TYPE:

